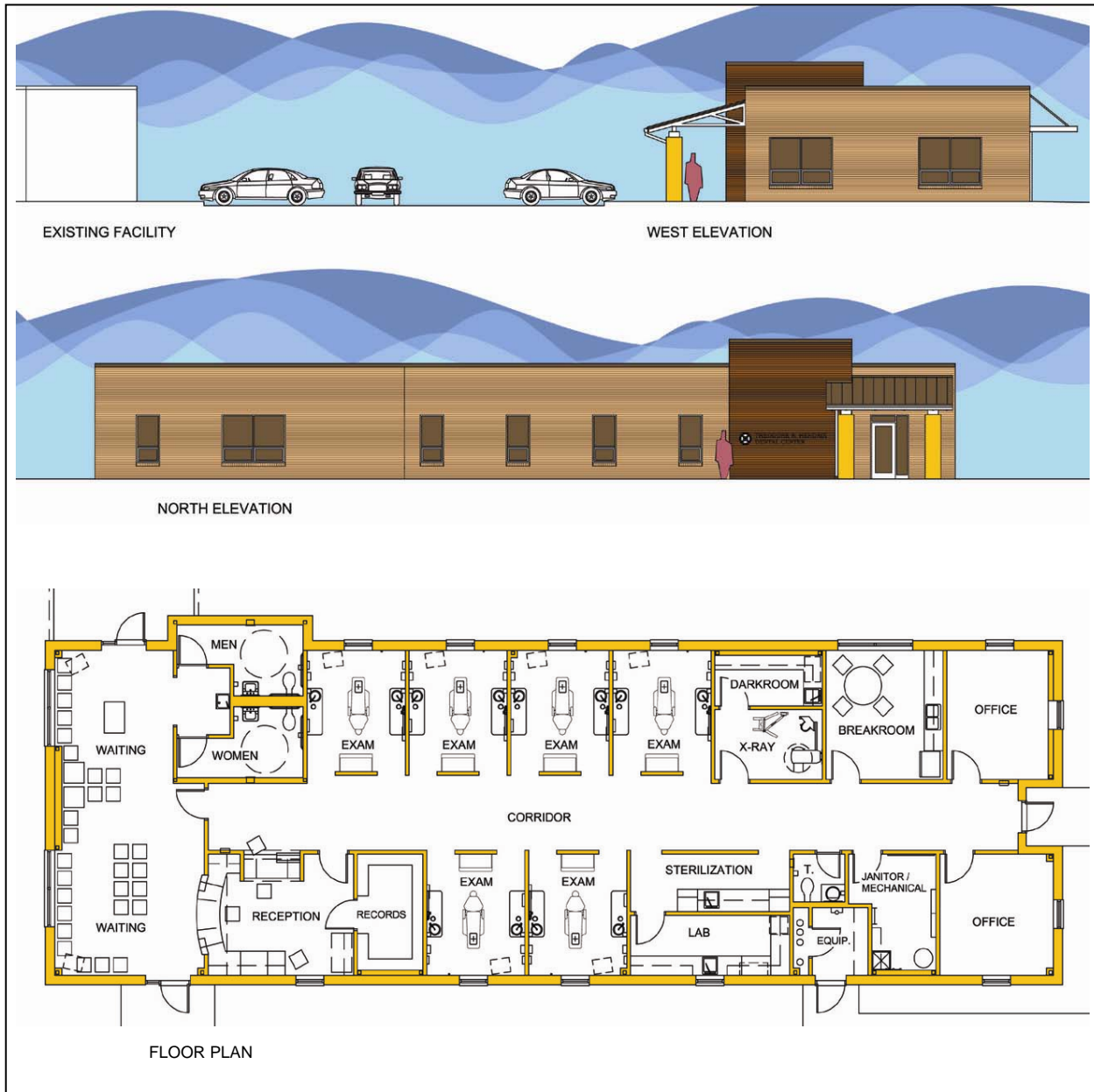




Andrew C. Jackson II

Hendrix Dental Facility

This project is a stand alone addition to the Whatley Health Service complex. This addition allows the Complex to provide public dental services at low cost to residents of the City of Tuscaloosa. The project was finished ahead of schedule, under budget and opened in December of 2005.



Owner:
Architect:
Contracting Method:

Whatley Health Services, Inc.
Fitts Architects
Traditional Bid

